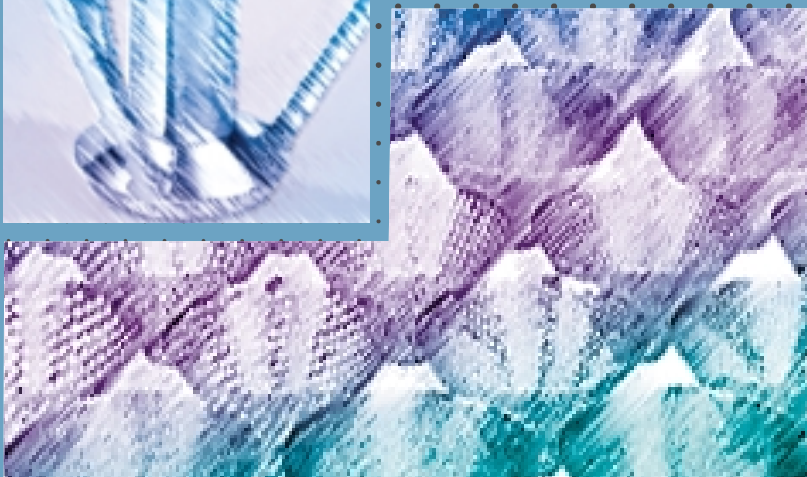
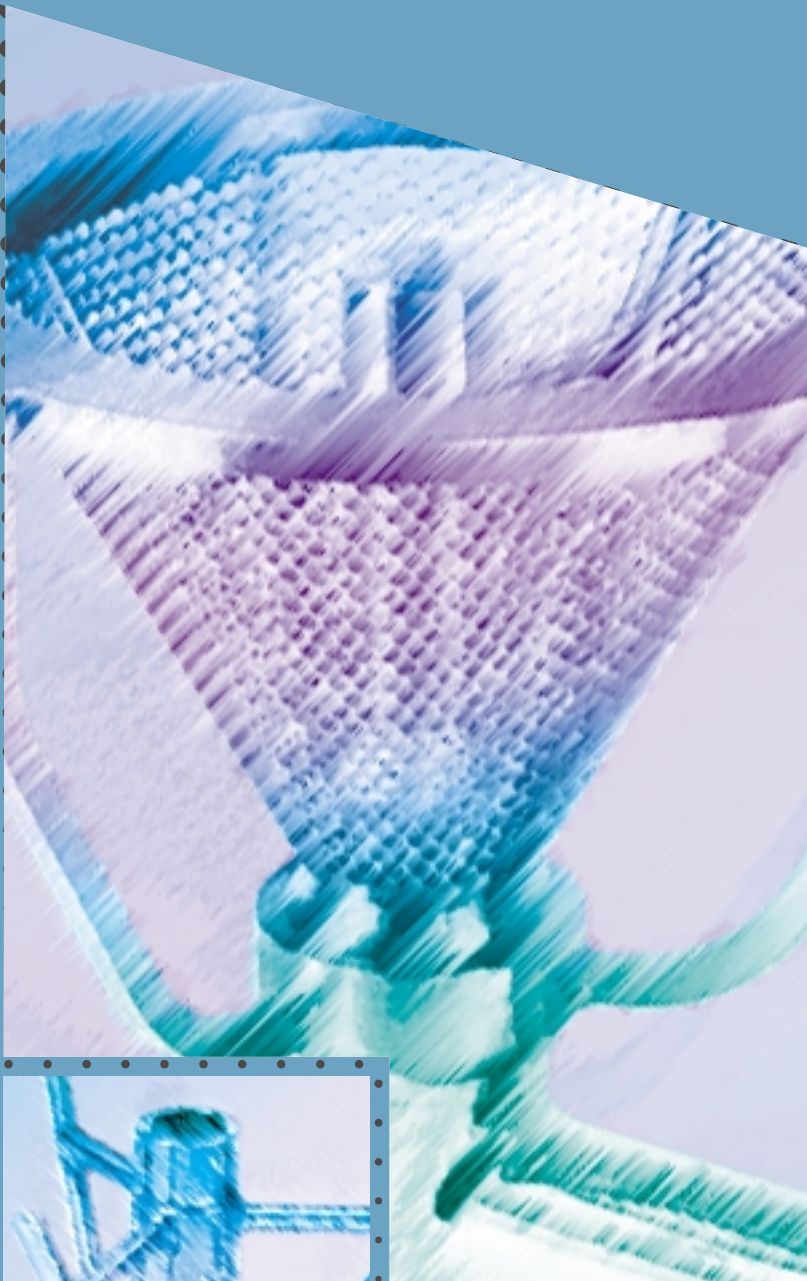


# GENTLE MILLING AND SIEVING

**FITZ<sup>®</sup>SIEVE**



**THE  
FITZPATRICK  
COMPANY**

# FITZSIEVE®

## FOR WET AND DRY PROCESSING

The FitzSieve is ideal for use in continuous or batch production and is designed to meet your process requirements.

- Underdrive design provides larger inlet opening for efficient feeding and maximum capacity
- Compact cGMP design
- Quiet operation
- Dust free containment
- Predictable and consistent end results
- Low heat generation
- The material can be flood fed to the milling chamber, so metering material is not required
- Gentle milling minimizes fines



Model FS 200

## APPLICATIONS INCLUDE:

- Delumping product being discharged from a blender or other process component
- Homogenizing a stream of material, or several streams together, to produce a homogenous product
- Size-reducing product for packaging or further processing
- Pre-breaking material which will be further reduced

**PATENTED DESIGN IS EASY TO USE...**

- Screen concentricity and repeatable set-up are insured with a patented screen holding system
- Simple, positive and accurate incremental adjustment (0.1 mm) of screen to impeller gap is provided, by another patented design, to improve process flexibility
- Fully enclosed drive mechanism, and proven sanitary seals, insure product purity
- Wide variety of screens and rotors are available, along with a variable speed drive with speed indication, for process optimization and maximum process flexibility
- Minimum number of parts for quick and easy assembly ►

**...EASY TO CLEAN**

- Process assembly can be heat sterilized in fully assembled condition
- All product contact parts are removable, lightweight and easy to clean
- Safety interlock assures proper orientation and placement of components

# MODELS & STYLES

## THIS VERSATILE COMPACT UNIT IS ENGINEERED FOR YOUR SMALL CAPACITY APPLICATIONS

- Incorporates the same process advantages of larger FitzSieves
- Easily disassembled product contact parts meet highest cGMP standards
- Unit is complete with controls that include a digital speed indicator and motor load indication
- Uses same base unit as the L1A FitzMill for increased flexibility (L1A milling chamber available as an option)
- Minimum surface area, reduces material retention, maximizing product yield with samples as small as 5 grams



Model FS 75



**THIS HEAVY DUTY UNIT IS ENGINEERED FOR HIGH CAPACITY APPLICATIONS**

- The rotor is driven from the underside of the unit, providing a large in-feed area, allowing large pieces of feed material and a high capacity product stream
- The clam shell process housing easily opens up for convenient cleaning and inspection
- With the housing opened, the equipment can be reconfigured or adjusted to optimize the process
- The capacity of the FS 600 is 25,000-40,000 Kg/hr



Model FS 600

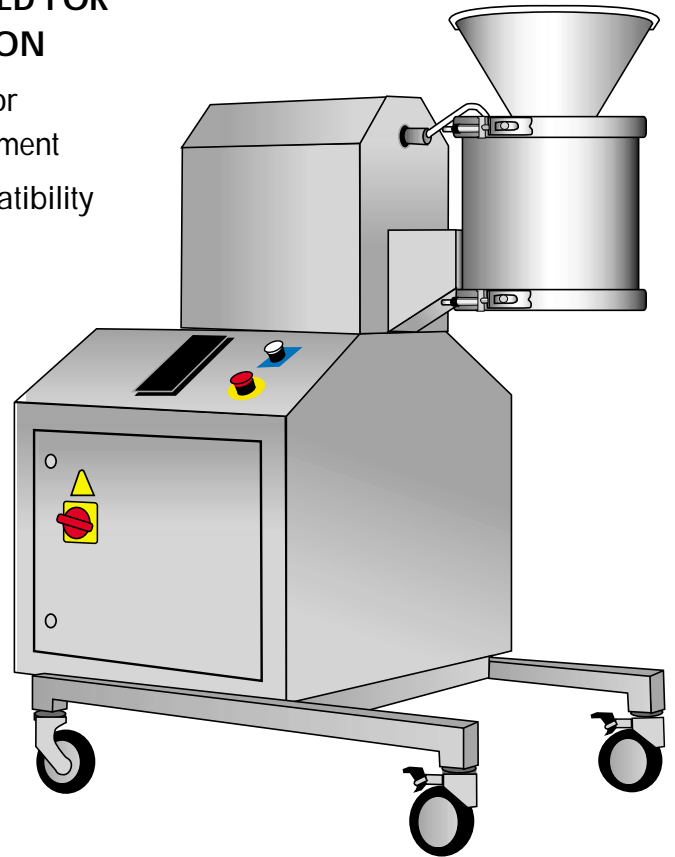


The FS 200 is a typical production unit with a capacity of 3,500-5,500 Kg/hr

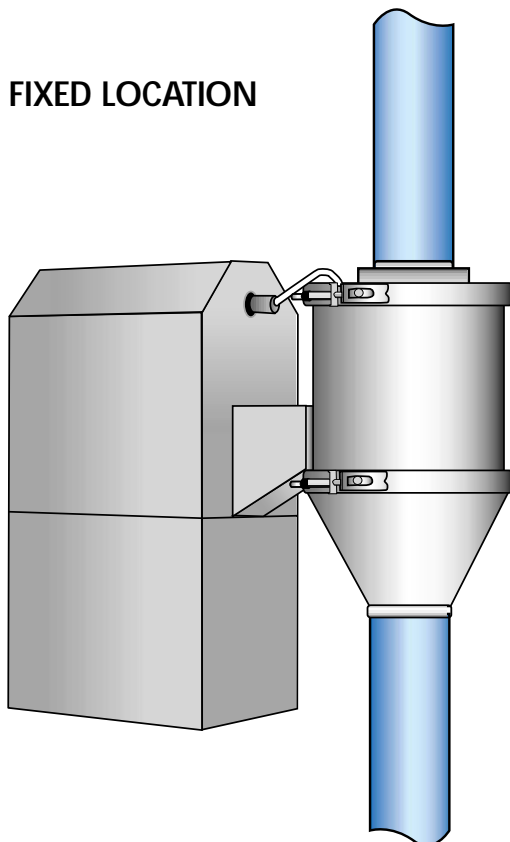
# INSTALLATION OPTIONS

## FLEXIBLE DESIGN CAN BE CONFIGURED FOR YOUR APPLICATION AND INSTALLATION

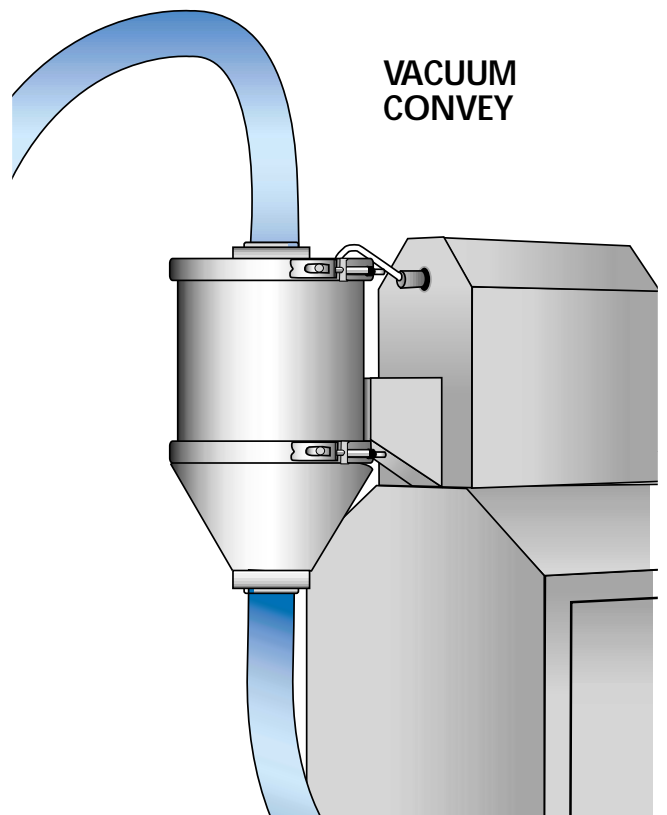
- Feed and discharge options available for connecting to ancillary operating equipment
- Electrical equipment available for compatibility with all environments and standards



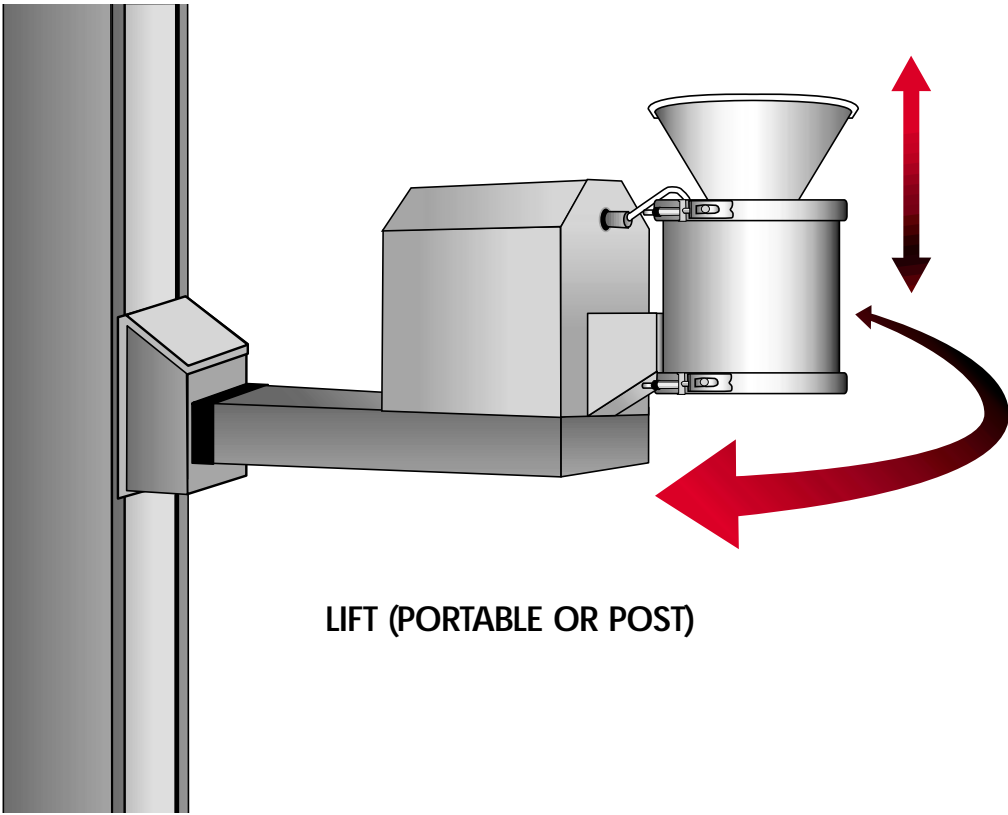
PORTABLE BASE



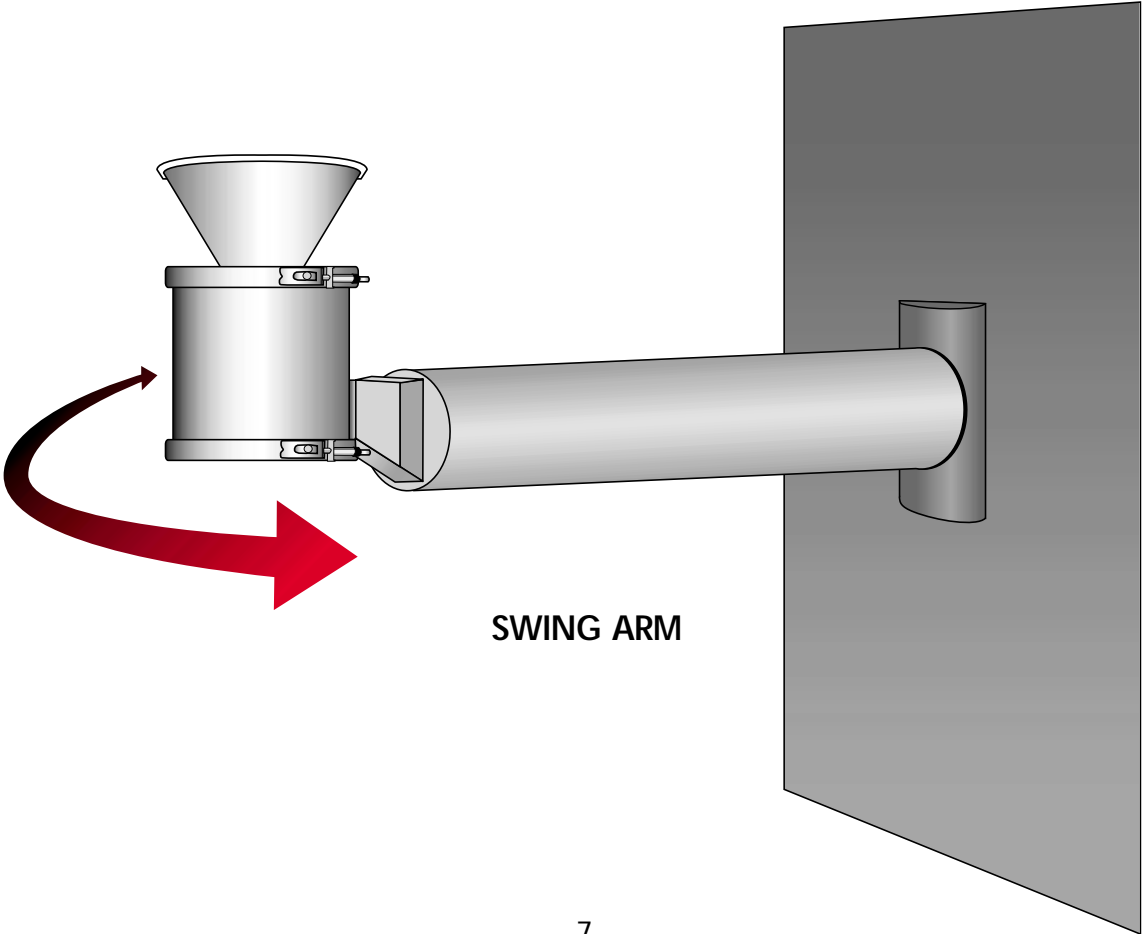
FIXED LOCATION



VACUUM CONVEY



LIFT (PORTABLE OR POST)



SWING ARM

# THE FITZPATRICK COMPANY

A TRADITION OF INNOVATION IN PROCESSING TECHNOLOGY

In the 1930's, The Fitzpatrick Company pioneered the development of particle size reduction technology. 20,000 machines and 10,000 customers later, Fitzpatrick upholds that tradition of innovation by continuing to manufacture the world's most advanced process equipment.

Pharmaceutical, chemical, food, plastics, and other industries utilize a wide range of Fitzpatrick machines, including the FitzMill® comminutor, Chilsonator® roll compactor, FitzSieve®, FitzAire® fluid bed dryer, and Guilriver® pre-breaking equipment. Each unit is built to stringent quality standards to operate under the most demanding manufacturing conditions.

The Fitzpatrick Company maintains manufacturing facilities, test laboratories, as well as service and support offices in Elmhurst, Illinois and Sint-Niklaas, Belgium. Additional testing and support services are provided from our office in South Plainfield, New Jersey.



**FITZSIEVE**

**THE FITZPATRICK COMPANY**

**FITZMILL**

## CORPORATE HEADQUARTERS

832 Industrial Drive  
Elmhurst, IL 60126 USA  
Phone: 630-530-3333  
Fax: 630-530-0832  
E-mail: info@fitzmill.com

## EASTERN U.S. DIVISION

4219 S. Clinton Ave.  
South Plainfield, NJ 07080 USA  
Phone: 908-561-1500  
Fax: 908-561-9636  
E-mail: info\_nj@fitzmill.com

## FITZPATRICK EUROPE N.V.

Entrepotstraat 8  
B-9100 Sint-Niklaas, Belgium  
Phone: +32 (0)3 7806200  
Fax: +32 (0)3 7661084  
E-mail: info@fitzpatrick.be

Visit us on our web sites: [www.fitzmill.com](http://www.fitzmill.com)  
For Europe: [www.fitzpatrick.be](http://www.fitzpatrick.be)