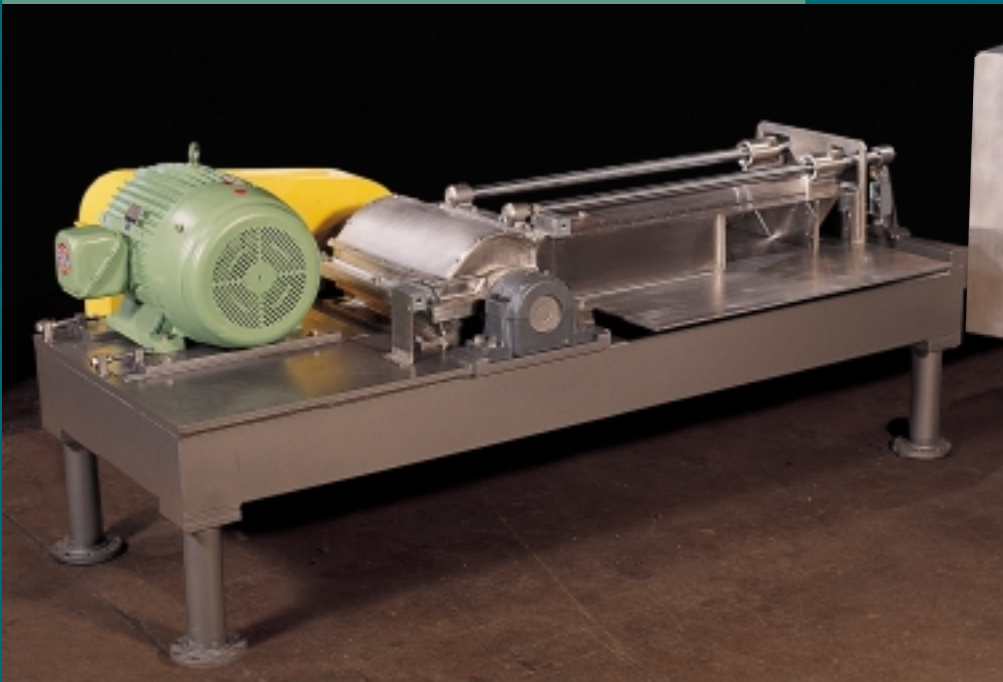


# GUILOCUTTER®

MODEL 20

From  
Rubber Bales to  
Particles...in less than  
a Minute

**FITZPATRICK®**



## REDUCES FAST

Transforms a whole synthetic rubber bale into particles in under 60 seconds. Efficiently combines the motion of a rotating knife with the guillotine cutting action of a blade and shear plate. Significant savings in energy cost can be realized with the GuiloCutter's low horsepower requirement.

## INCREASES PRODUCTIVITY

The GuiloCutter can be fed manually but can also accommodate continuous feeding by way of an on-board cross conveyor option.

## IDEAL FOR HEAT-SENSITIVE PRODUCTS

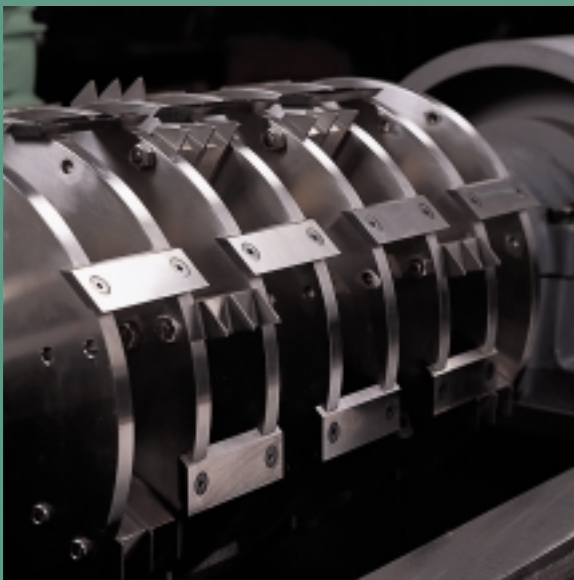
Cool-running operation with minimum temperature rise accommodates multiple applications. Patented, open-cage rotor with staggered knives and pathcutters disperses heat, eliminating need for special cooling.

## PRODUCES UNIFORMLY SIZED PARTICLES

Benefit from highly consistent output dimensions. Change particle size simply by adjusting the feed rate.

## PREVENTS CONTAMINATION

All product contact parts are constructed of high quality, stainless steel.



**THE  
FITZPATRICK  
COMPANY**

## SPECIFICATIONS

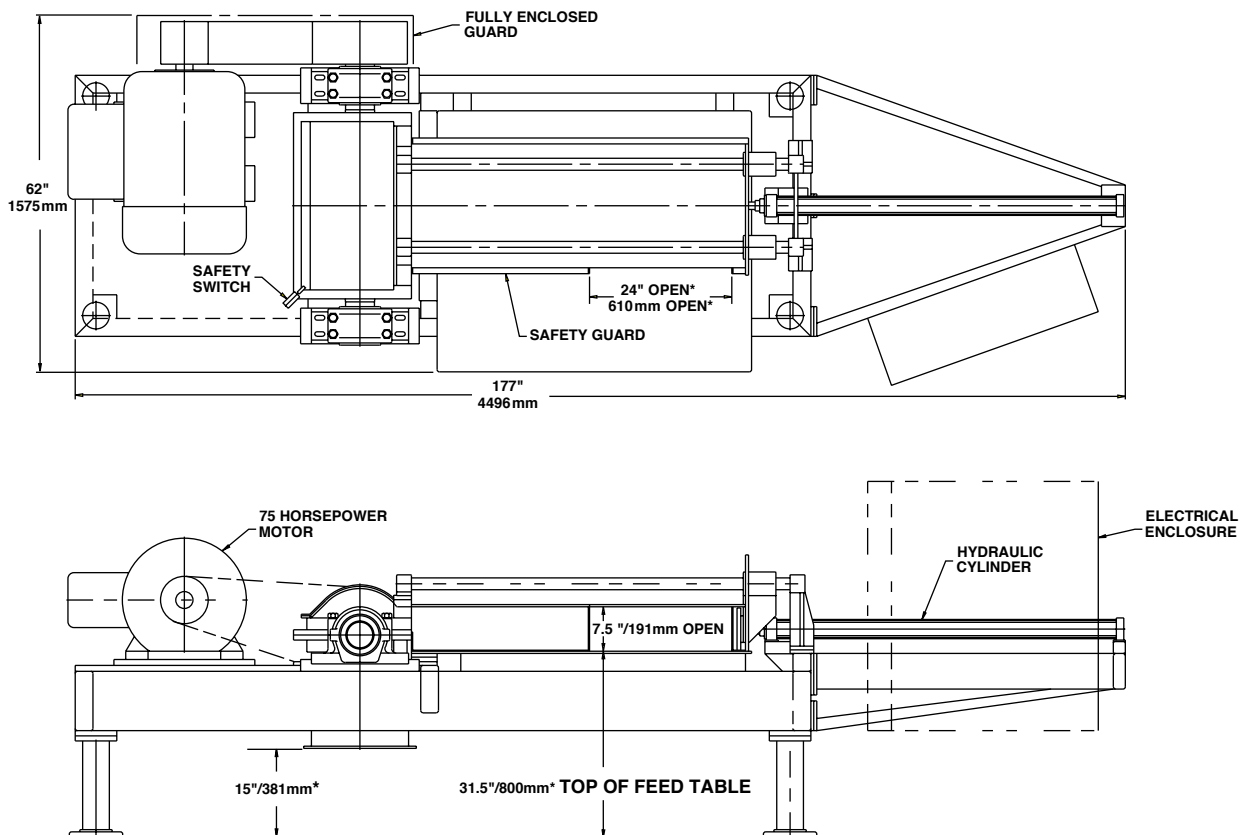
### MODEL 20 GUILOCUTTER® ...Quality Stainless Steel Construction

#### FEED SPECIFICATIONS

- Top guided feed ram (pusher plate) actuated by heavy duty, hydraulic cylinder
- Automatic or manually operated adjustable feed system

#### OTHER SPECIFICATIONS

- Stainless steel screen and 4 auxiliary bed bars
- Standard horizontal motor—special classifications are available
- All stainless steel product contact surfaces
- Discharge equipped with flange for attachment of conveying transition
- Feed opening 7½" x 24"\* (190mm x 610mm\*)



**FITZPATRICK®**

\*Dimensions can be customized

#### CORPORATE HEADQUARTERS

832 Industrial Drive  
Elmhurst, IL 60126  
Phone: 630-530-3333  
Fax: 630-530-0832  
E-mail: info@fitzmill.com  
www.fitzmill.com

#### EASTERN DIVISION

4219 S. Clinton Ave.  
South Plainfield, NJ 07080  
Phone: 908-561-1500  
Fax: 908-561-9636  
E-mail: info\_nj@fitzmill.com

#### FITZPATRICK EUROPE N.V.

Entrepotstraat 8  
9100 Sint-Niklaas, Belgium  
Phone: 03-777-7208  
Fax: 03-766-1084  
E-mail: info@fitzpatrick.be  
www.fitzpatrick.be