

Continuous Processing System



BENEFITS & APPLICATIONS

The Malaxator® is a multi-function process system capable of achieving the following:

- Continuous, intimate mixing of powders and liquids under controlled conditions producing consistent results
- Heating or cooling of powders can be achieved by optional jacketing of the mixing vessel
- Direct steam injection into the mixing zone for cooking or reacting
- Dedusting of powders
- Rehydration of food products
- Agglomeration of fine powders

SANITARY CONSTRUCTION

304 Stainless Steel construction and special design allow for superior cleanability in the food, pharmaceutical and fine chemical industries.

PROCESS FLEXIBILITY

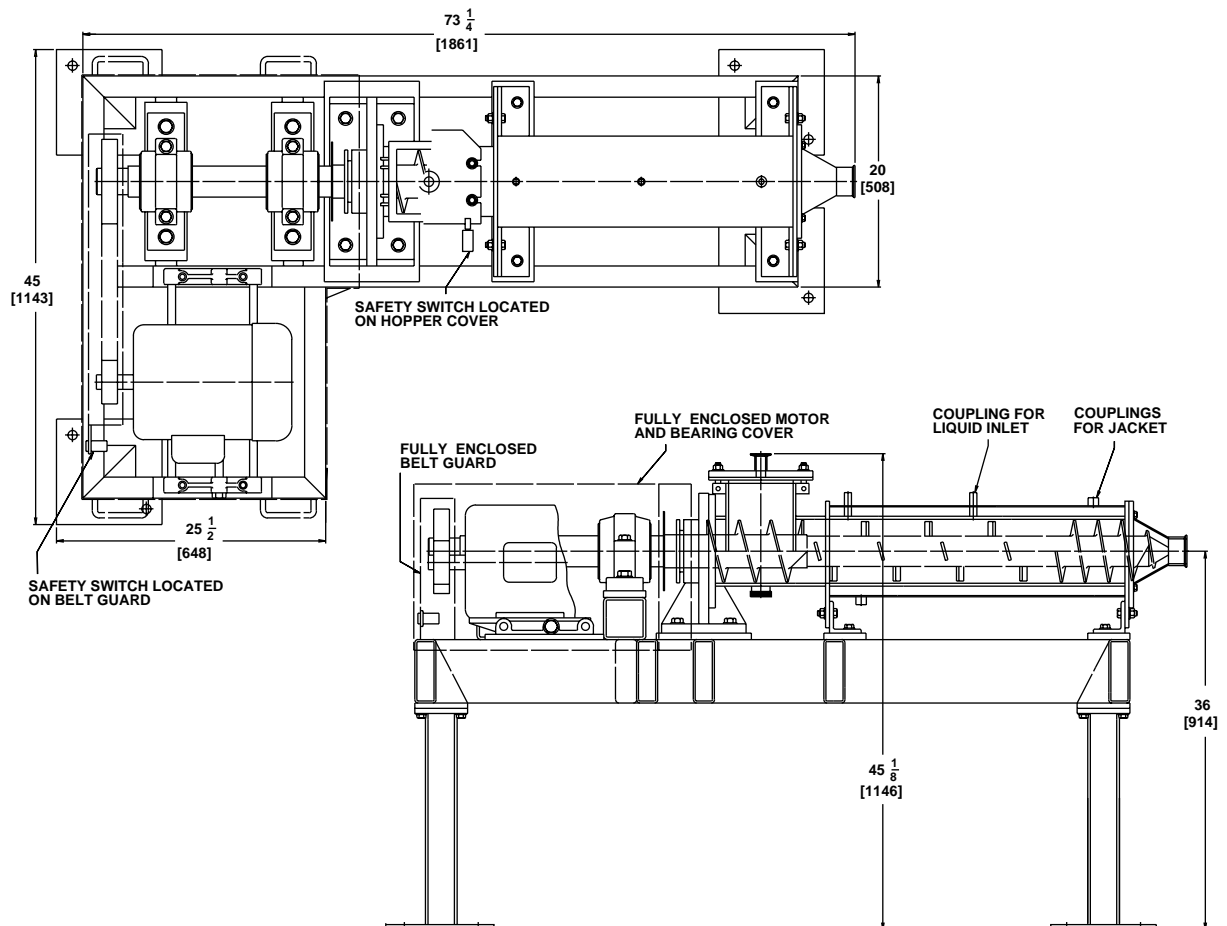
Adjustable paddles allow reverse action and mixing, improving mix consistency.

Can be designed in various sizes for a wide range of applications and capacities.

SPECIFICATIONS

MALAXATOR®...Continuous Processing System

- Product contact parts of 304 Stainless Steel or special materials of construction
- Adjustable mixing paddles for intimate and complete blending
- Jacketed housing for heating or cooling
- Multiple injection ports located in process housing for introduction of liquids or steam
- Available with variable speed control for process flexibility
- Can be customized to meet your specific requirements



Dimensions indicated $\frac{\text{inches}}{\text{millimeters}}$

FITZPATRICK®

CUTTING EDGE SOLUTIONS...IN CONTINUOUS PROCESSING SYSTEMS

CORPORATE HEADQUARTERS

832 Industrial Drive
Elmhurst, IL 60126
Phone: 630-530-3333
Fax: 630-530-0832
E-mail: info@fitzmill.com
www.fitzmill.com

EASTERN DIVISION

4219 S. Clinton Ave.
South Plainfield, NJ 07080
Phone: 908-561-1500
Fax: 908-561-9636
E-mail: info_nj@fitzmill.com

FITZPATRICK EUROPE N.V.

Entrepotstraat 8
B-9100 Sint-Niklaas, Belgium
Phone: 32-3-777-7208
Fax: 03-766-1084
E-mail: info@fitzpatrick.be
www.fitzpatrick.be